

62 +/- ACRES

5940 Camp Bullis Rd | San Antonio | Texas | 78257

FOR SALE



17020 San Pedro Ave, Suite 100
San Antonio, TX 78232
www.becker-realtors.com

For Information, Call Jess Noval
210-823-5673



62+/- ACRES

5940 Camp Bullis Rd

DETAILS

Available: 62+ Acres for Sale

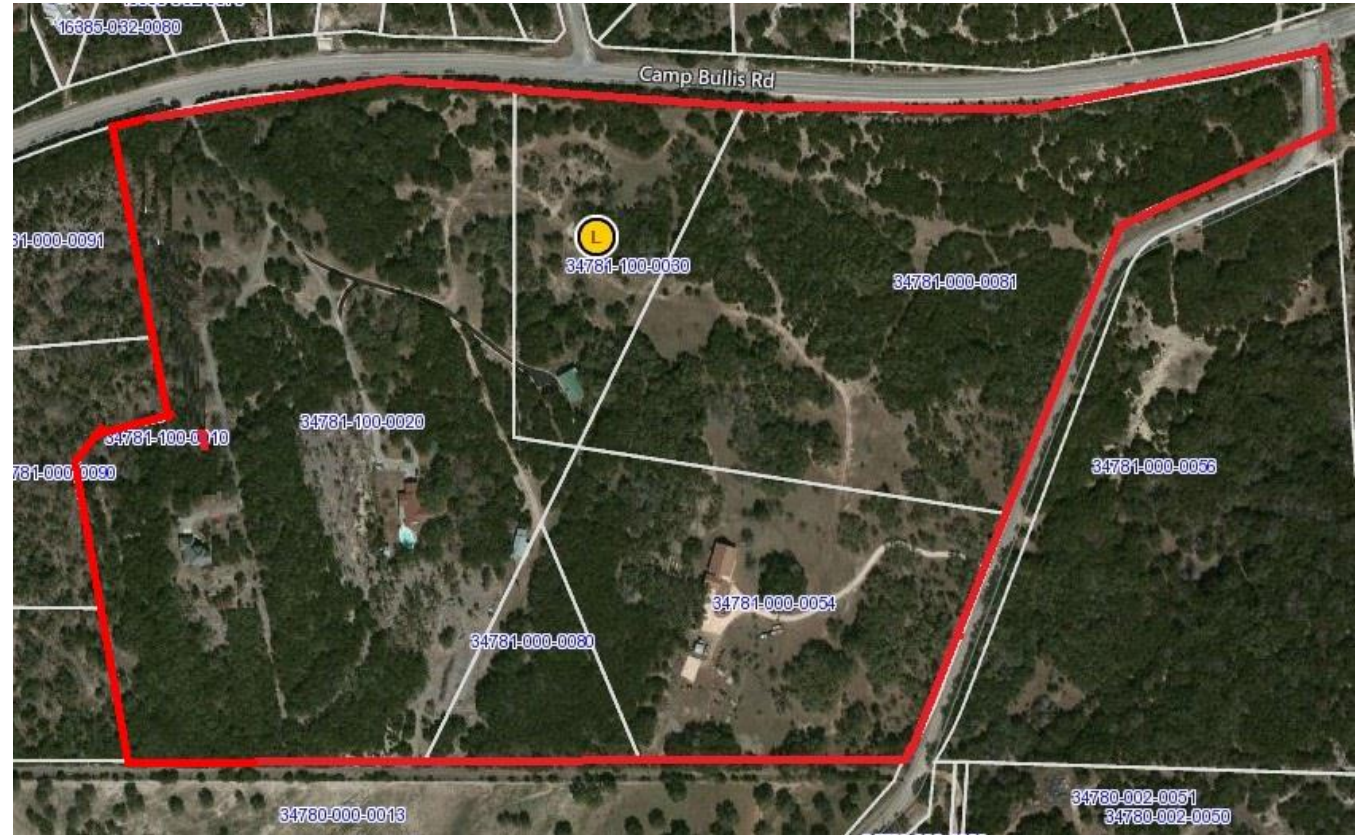
Price: Contact Broker

Land: Undeveloped

Zoning: R-20

Property Use Type: Owner Occupied/Commercial

Property Sub-Type: Residential (Land)



Jess Noval

jess@becker-realtors.com

210-823-5673



62+/- ACRES

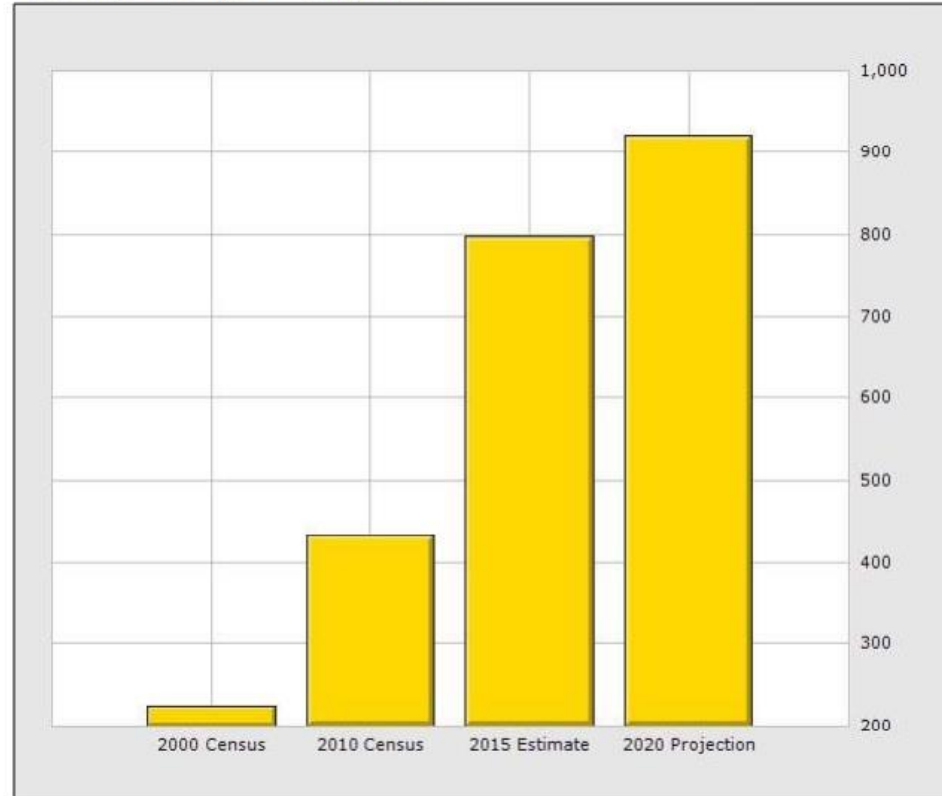
5940 Camp Bullis Rd

DETAILS

Nearby Amenities: Established neighborhoods, developing neighborhoods, developing apartment complexes, Raymond Russell Park, Friedrich Park, The Rim shopping center, La Cantera, Six Flags Fiesta Texas, University of Texas at San Antonio

Population for 1 Mile Radius

5940 Camp Bullis Rd, San Antonio, TX 78257



Population	1 Mile	3 Mile	5 Mile
2015 Total Population:	798	14,221	81,150
2020 Population:	921	16,083	89,164
Pop Growth 2015-2020:	15.41%	13.09%	9.88%
Average Age:	37.40	37.20	35.40
Households			
2015 Total Households:	376	5,814	30,318
HH Growth 2015-2020:	16.22%	13.48%	10.13%
Median Household Inc:	\$104,787	\$110,631	\$90,632
Avg Household Size:	2.10	2.40	2.50
2015 Avg HH Vehicles:	2.00	2.00	2.00
Housing			
Median Home Value:	\$611,764	\$402,964	\$295,551
Median Year Built:	2008	2004	2001

Demographics and graph provided by Costar



Jess Noval

jess@becker-realtors.com

210-823-5673